

PLANTING SCHEDULE

Species	Stock type	Spacing	Quantity	Notes
Betula pubescens (Hairy Birch) B	16-18cm girth 4-5m h. rootballed/underground grafted	2.5-4m	7	Courtyard
Platanus x acerifolia Pyramidalis (London Plane) LP	semi mature 25-30cm girth cm height 4.5m. Rootballed/underground grafted	as shown	1	Main entrance
Amelanchier lamarkii A	multi stemmed 3-4 stems 3.5m height rootballed/underground grafted	3-5m	15	Frontage garden areas and residents garden
Ilex aquifolium (Holly) H	80-100 cm. container grown low staked	3m	14	Hedge/shrub mix
Ilex aquifolium Pyramidalis (Feathered Holly)	2-2.5m wire rootballed Feathered form.	4m	3	Specimen planting to frontage bed

ESPAILLER TREES TO GROWING AREA

Species	Stock type	Spacing	Quantity	Notes
ESPAILLER APPLES Malus rubra Pippin Mpp	Espallier trees 2 per m ² bare rooted trained and tied to cable support lines to posts as detail	2m		To courtyard and front garden beds
Malus Discovery Md	Proposed suppliers R V Ridger Pickering TEL 01751 47226 email sales@rvr.co.uk	2m		
Pyrus domestica Pd				

Groundcover / Herbaceous planting / Edible Herbs (Community Garden Area)

Species	Stock type	Spacing	Quantity	Notes
Rosmarinus officinalis Tusacan blue R	3L c.g	4/ sq. m.		
Salvia officinalis Purpurea (Purple Sage) S	2L c.g	4/ sq. m.		
Lavandula spica Hidcote (Lavender) L	3L c.g	4/ sq. m.		
Origanum vulgare 'Aureum Crispum' (Oregano) Ov	2L c.g	300mm		
Verbena bonariensis Vb	2L c.g	300mm		
Plectranthus viridifolius Pv	3L c.g	4 / sq.m.		
Pachyandra terminalis Pt	2L c.g	7/ sq. m.		
Allium schoenoprasum (Chives) Al	P9	300mm		
Anethum graveolens (Dill) Di	P9	300mm		
Carex elata Aurea	2L c.g	4/ sq.m		
Deschampsia caespitosa	2L c.g	3/ sq. m		

SHRUBS & GROUNDCOVER (General Site)

Species	Stock type/size	Spacing	Quantity	Notes
Pyracantha Orange Glow Pog	600-900 c.g	3/ sq.m.		Generally trained up walls/fences General shrub mix single species groups of 7-12 General shrub mix & hedging.
Prunus laetiflora P	600-900 c.g	3/ sq.m		
Lonicera pileata Maigrun Lp	300-450 3L c.g	4/ sq.m		
Hydrangea microphylla H Lanarth White	600-900 c.g 4 stems min	2/ sq.m		Specimen planting in community garden
Amelanchier lamarkii	600-900 bare root 3-4 stems			General shrub mix single species groups of 7-12
Cornus alba Sibirica	600-900 bare root 3-4 stems			
Viburnum opulus Roseum	600-900 bare root 3-4 stems			
Chaenomeles japonica (Japanese Quince) Chs	300-450 branched 3L c.g	4/ sq.m.		Community garden front of garden walls
Euonymus fortunei Emerald Gaiety Elg	300-450 branched 3L c.g			Residents growing area herb garden.
Geonium oxianum Wagoner Flak	11 c.g			Courtyard planting beds
Geranium Rozanne	11 c.g			In community garden in shaded area under ex trees.

Shrub planting mix @ 3per square metres density	BULB PLANTING IN GROUNDCOVER AREAS- Single species groups of 9-17 plants in equal proportions.
Amelanchier lamarkii	Narcissus Tete a Tete NTT groups of 15 bulbs to residents gardens and community area.
Cornus alba Sibirica	Crocus ornatus Co groups of 20 bulbs
Pyracantha Orange Glow	Crocus sabotii Cs groups of 20 bulbs
Viburnum opulus Roseum	Hyacinthoides non scripta (Native Bluebell) Hns under mature trees Groups of 20 bulbs
Prunus laetiflora	Tulipa ballerina Tb Tulipa Spring Green Tbg Groups of 20 bulbs In community garden area
	Galanthus rivalis Gn Groups of 20 bulbs

GENERAL NOTES

All trees, shrubs and hedge plants supplied shall comply with the requirements of British Standard 3838, Specification for Nursery Stock. All pre-planting site preparation, planting and post-planting maintenance works shall be carried out in accordance with the requirements of British Standard 4428/1989 Code of Practice for General Landscaping Operations (including hard surfacing).

All new tree plantings shall be positioned in accordance with the requirements of Table A.1 of BS5837:2012 Trees in Relation to Design, Demolition and Construction (Recommendations)

a) Tree pit sizes:
Semi mature 210x170 depth extra heavy 1200mm diameter x 750mm depth.
Whip/standard 150x450 depth.

300mm approved topsoil or free soil with 600mm approved subsoil lightly compacted in 300mm layers

b) Imported topsoil to comply with BS 3883 general purpose.
Medium texture, stone content less than 10%. Free from weeds, sticks and foreign matter.
400mm depth to shrub planted area.
Underlaid with 300mm depth approved subsoil with free draining base.

c) Sloping ground - maintain horizontal bases and vertical sides with no less than minimal depth through out.

d) Trees to receive base dressing of slow release fertilizer 70g per pit. Emag or similar approved.
Suppliers: Scotts, Paper Mill Lane, Bradford, Ipswich IP8 4BZ Tel: 01473 830462.

e) All tree planting in grassed areas to incorporate 300mm radius circle of bark mulch dressing to base of tree stem.

f) All planted areas to be cultivated to 400mm depth, add imported topsoil & soil improver eg sand in areas to improve drainage.

g) Planting beds to be raised over and edges defined.

h) All planted areas to be mulched with 75mm depth coarse Bark Mulch

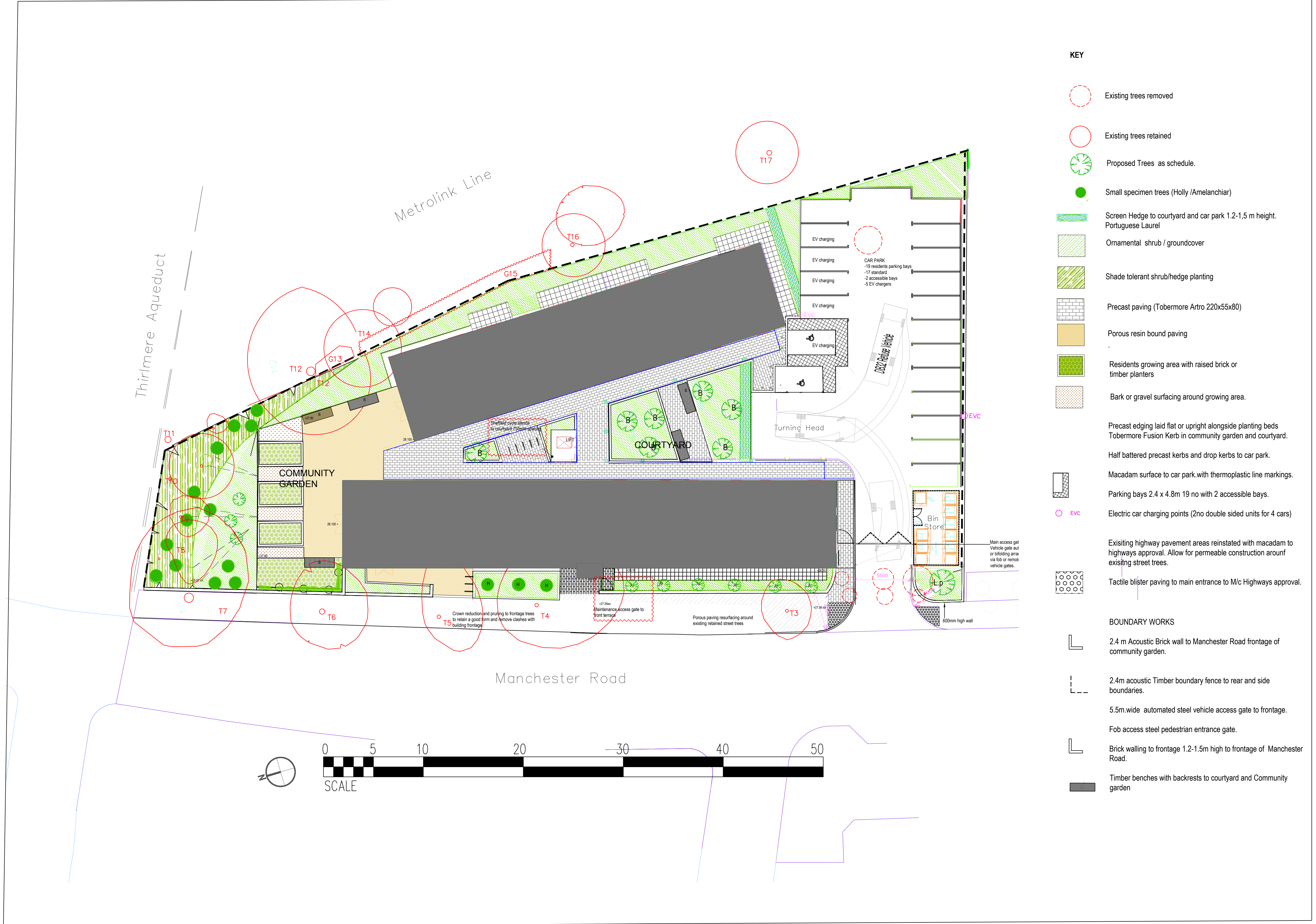
i) Any debris or stones larger than 50mm to be taken off site.

j) Plants to be watered in as necessary

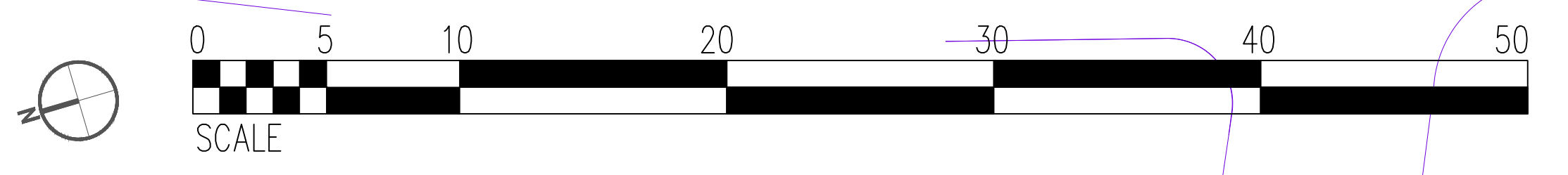
k) Slow grass seed generally April/October, preferably late summer/early autumn. Topsoil depth to be 150mm. Medium texture, stone content less than 10%. Free from weeds, sticks and foreign matter.

MAINTENANCE

Contractor to allow for one year's maintenance post practical completion.
(To encompass all weed one full growing season prior to handover)
Allow for adequate watering and weeding control of plant beds.
Ensure beds are kept free from weed growth up to handover.
Dead or stunted plants to be replaced to be replaced by contractor at the end of the defects period.
Maintenance operation to be as per to be as per detailed project specification.



- KEY**
- Existing trees removed
 - Existing trees retained
 - Proposed Trees as schedule.
 - Small specimen trees (Holly /Amelanchiar)
 - Screen Hedge to courtyard and car park 1.2-1.5 m height. Portuguese Laurel
 - Ornamental shrub / groundcover
 - Shade tolerant shrub/hedge planting
 - Precast paving (Tobermore Artro 220x55x80)
 - Porous resin bound paving
 - Residents growing area with raised brick or timber planters
 - Bark or gravel surfacing around growing area.
 - Precast edging laid flat or upright alongside planting beds Tobermore Fusion Kerb in community garden and courtyard.
 - Half battered precast kerbs and drop kerbs to car park.
 - Macadam surface to car park with thermoplastic line markings.
 - Parking bays 2.4 x 4.8m 19 no with 2 accessible bays.
 - EVC Electric car charging points (2no double sided units for 4 cars)
 - Existing highway pavement areas reinstated with macadam to highways approval. Allow for permeable construction around existing street trees.
 - Tactile blister paving to main entrance to M/c Highways approval.
- BOUNDARY WORKS**
- 2.4 m Acoustic Brick wall to Manchester Road frontage of community garden.
 - 2.4m acoustic Timber boundary fence to rear and side boundaries.
 - 5.5m wide automated steel vehicle access gate to frontage.
 - Fob access steel pedestrian entrance gate.
 - Brick walling to frontage 1.2-1.5m high to frontage of Manchester Road.
 - Timber benches with backrests to courtyard and Community garden



REVISIONS	
A	4/07/2023
Vehicle protection bollards to metrolink boundary Sheffield cycle stands to courtyard and Manchester Road frontage Crown pruning indicated to frontage trees Maintenance access gates indicated to front garden terrace Parking bays adjusted to ease vehicle turning head Vehicle and pedestrian gates moved back from building entrance Tree group G2 in access way shown as being removed	
B July 2023 Elmire entrance arrangement coordinated with Business Layout (Bollards by Metrolink removed)	
PLANNING SUBMISSION	
Stephen Martlew Landscape Architecture	
Unit 2 Ba Loom Street Manchester M4 6AN	
TELEPHONE 0795 1023205	
DRAWING TITLE	LANDSCAPE LAYOUT
DRAWING No	2301/p101
PROJECT	CHORLTON LEISURE CENTRE
CLIENT	Buttress
SCALE	1:200 @ A 1
DATE	March 2023
DRAWN	PG
CHECKED	SM